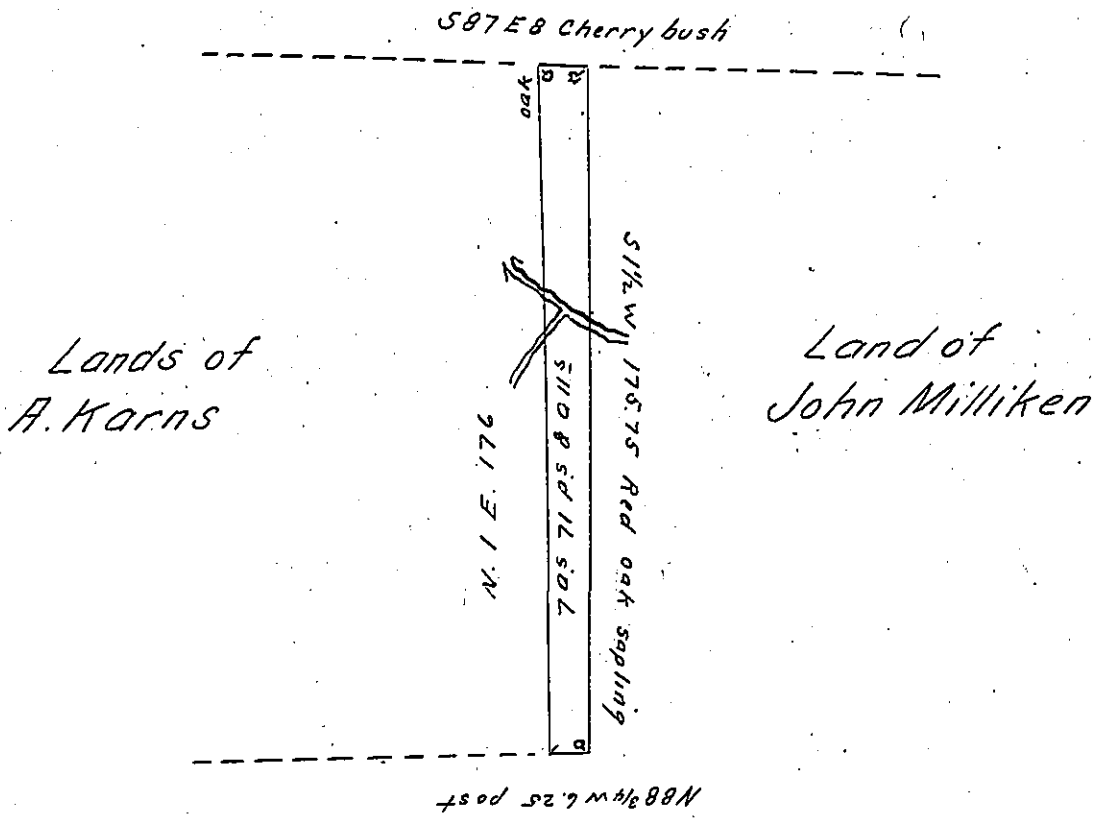


Land of D. Shaw



Chas Shippen

Draft of a lot of land Situate in Richland Township Venango County East of the Allegheny River.

Survey'd July 11th 1867 for W^m A.

Karns in pursuance of a warrant granted to him dated 15th August A. D. 1866 and contains as above Seven acres Seventy one perches & allowance of Six pr. ct. &c.

W^m Hilands

Hon

C. S.

J. M. Campbell
Surveyor General

IN TESTIMONY that the above is a copy of the original remaining on file in the Department of Internal Affairs of Pennsylvania, made conformably to an Act of Assembly approved the 16th day of February, 1833, I have hereunto set my Hand and caused the Seal of said Department to be affixed at Harrisburg, this twenty third day of June 1905.

George P. Brown
Secretary of Internal Affairs.